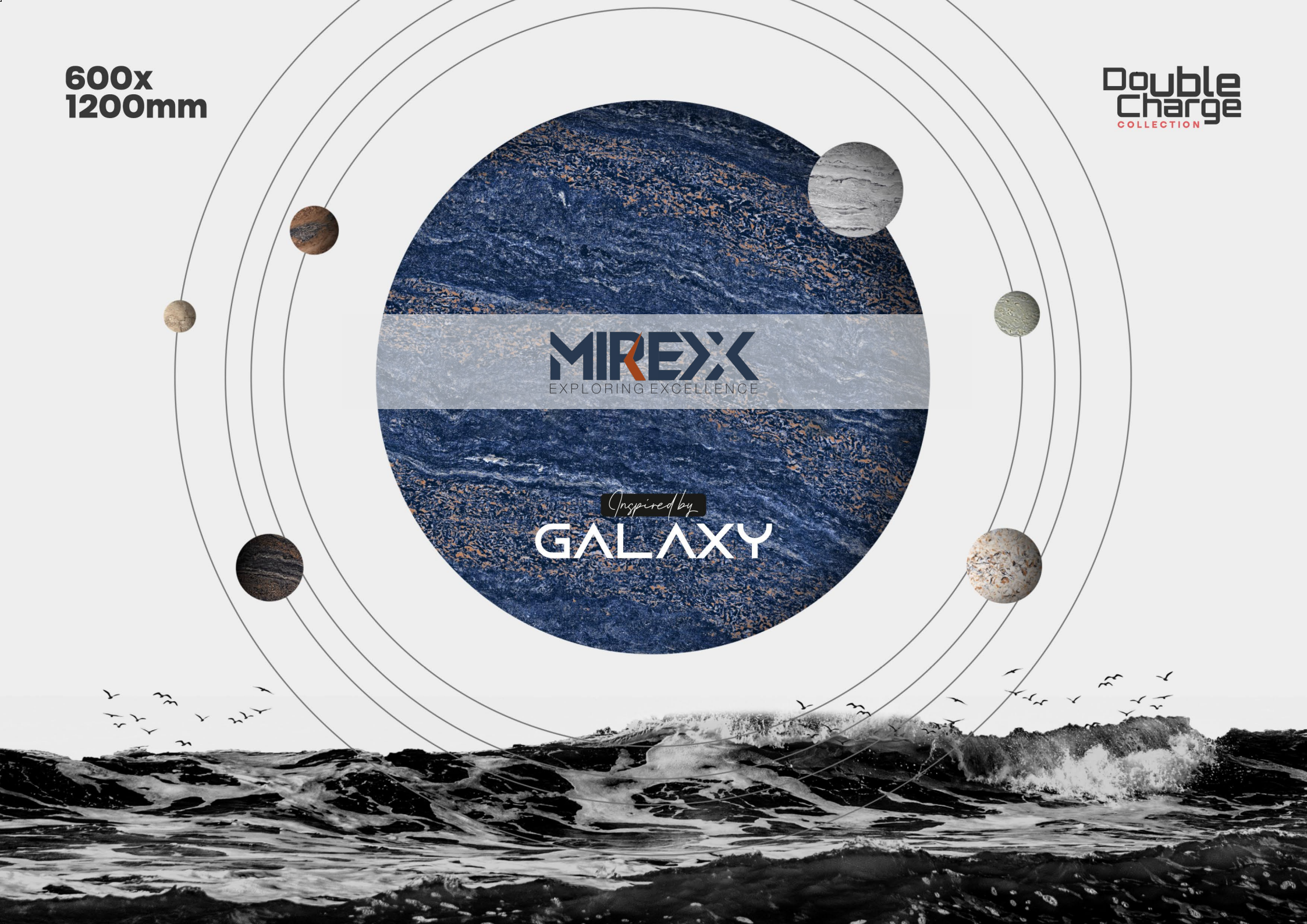


600x
1200mm

Double
Charge
COLLECTION

MIREXX
EXPLORING EXCELLENCE

Inspired by
GALAXY



Inspired By
EARTH'S RICH
STONE AND
TEXTURES



EMBRACE CONTEMPORARY STYLE WITH SPACE



FEATURES



9MM
Thickness



Frost
Resistance



High Load
Resistance



Thermal
Impact



Anti-slip
Finish



Removable &
Reuse



Easy to
Install



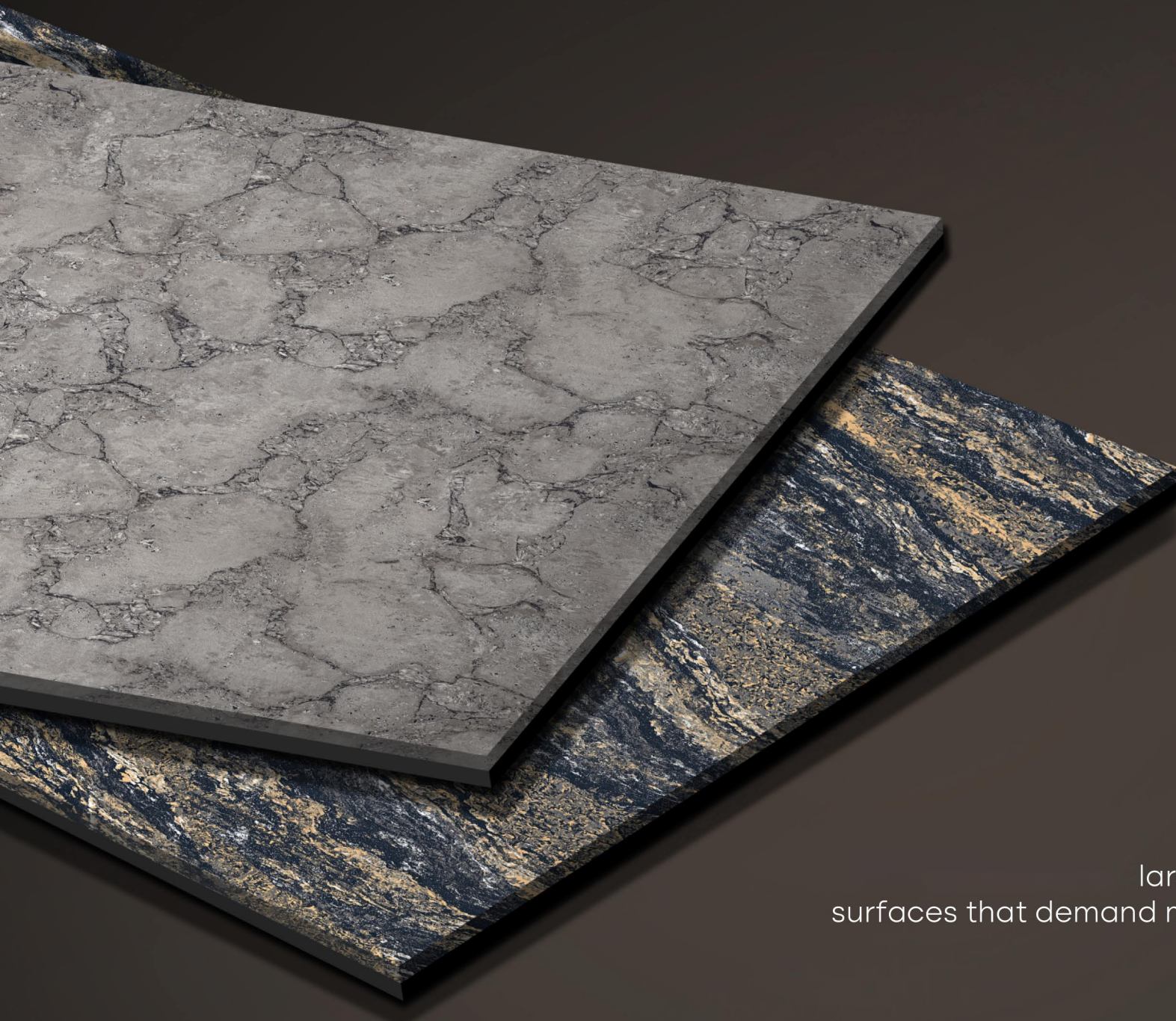
Chemical
Resistance



Ecological
Finish



Fire
Proof



**LARGEST
PRODUCTION CAPACITY**

**600x
1200mm**
GVT / PGVT

large-sized slabs are ideal for
surfaces that demand maximum hygiene, strength
and aesthetic harmony.

DIMENSION
600x1200 mm
2'x4' | 24"x48"

FINISH
POLISHED GLOSSY
SURFACE

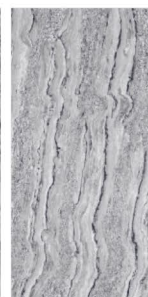
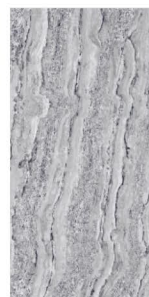
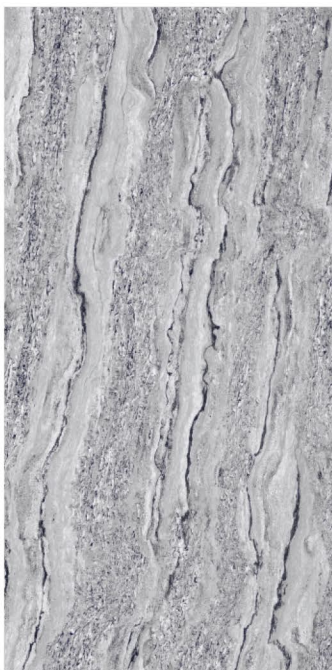
<div>ALTA</div> <div></div> <div>BEIGE GREY</div>	<div>CITIC</div> <div></div> <div>IVORY SILVER</div>	<div>DOPIC</div> <div></div> <div>BROWN GRIS WHITE</div>	<div>FOLIA</div> <div></div> <div>BEIGE BROWN WHITE</div>	<div>FERON</div> <div></div> <div>WHITE</div>	
<div>MESPA</div> <div></div> <div>NERO WHITE</div>	<div>OXITANO</div> <div></div> <div>GREY WHITE</div>	<div>PIDA</div> <div></div> <div>GREY</div>	<div>SILERIO</div> <div></div> <div>BROWN WHITE</div>	<div>TERACON</div> <div></div> <div>BROWN GREY</div>	<div>USETA</div> <div></div> <div>GREY WHITE</div>
<div>ZIZEL</div> <div></div> <div>WHITE</div>					

ALTA

BEIGE



GREY



FINISH
POLISHED GLOSSY
SURFACE

DIMENSION
600x1200 mm
24"X48" | 2'X4'

RANDOM
FACES

[BACK TO INDEX](#)



CITIC

IVORY



SILVER



FINISH
POLISHED GLOSSY
SURFACE

DIMENSION
600x1200 mm
24"X48" | 2'X4'

RANDOM
FACES

[BACK TO INDEX](#)



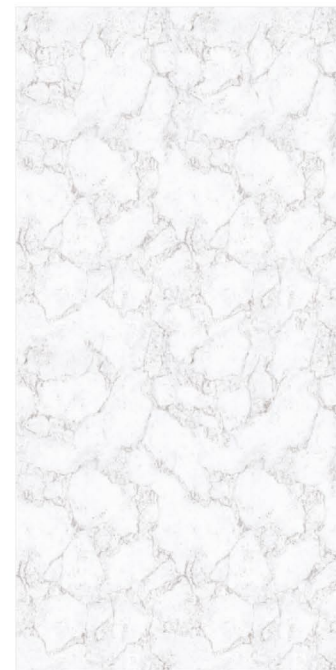
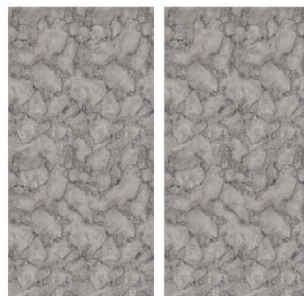
DOPIC



BROWN



GRIS



WHITE



FINISH
POLISHED GLOSSY
SURFACE

DIMENSION
600x1200 mm
24"X48" | 2'X4'

RANDOM
FACES

[BACK TO INDEX](#)



FERON



WHITE



FINISH
POLISHED GLOSSY
SURFACE

DIMENSION
600x1200 mm
24"X48" | 2'X4'

RANDOM
FACES

[BACK TO INDEX](#)



FOLIA

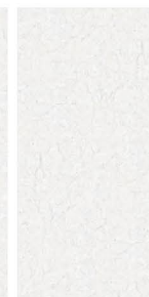
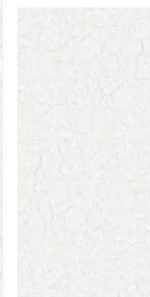
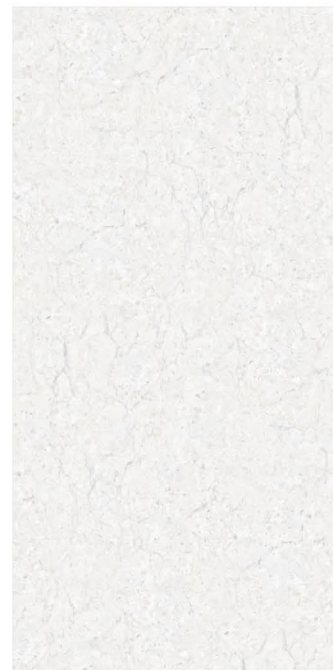
BEIGE



BROWN



WHITE



FINISH
POLISHED GLOSSY
SURFACE

DIMENSION
600x1200 mm
24"X48" | 2'X4'

RANDOM
FACES

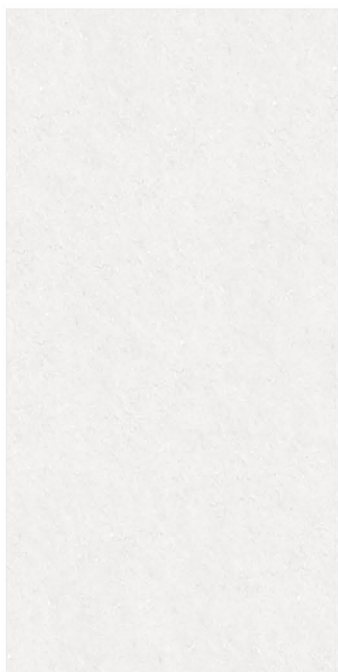
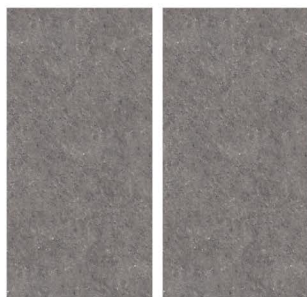
[BACK TO INDEX](#)



MESPA



NERO



WHITE



FINISH
POLISHED GLOSSY
SURFACE

DIMENSION
600x1200 mm
24"X48" | 2'X4'

RANDOM
FACES

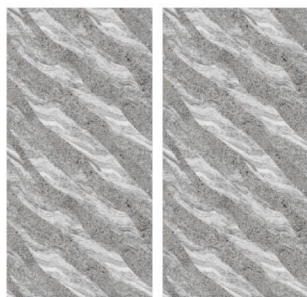
[BACK TO INDEX](#)



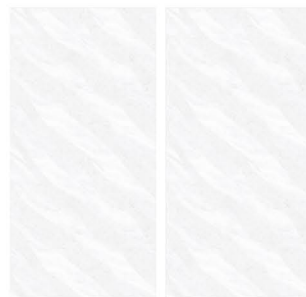
OXITANO



GRAY



WHITE



FINISH
POLISHED GLOSSY
SURFACE

DIMENSION
600x1200 mm
24"X48" | 2'X4'

RANDOM
FACES

[BACK TO INDEX](#)



PIDA



GREY



FINISH
POLISHED GLOSSY
SURFACE

DIMENSION
600x1200 mm
24"X48" | 2'X4'

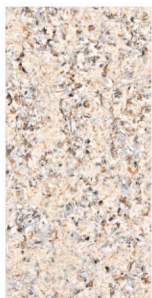
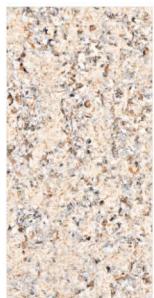
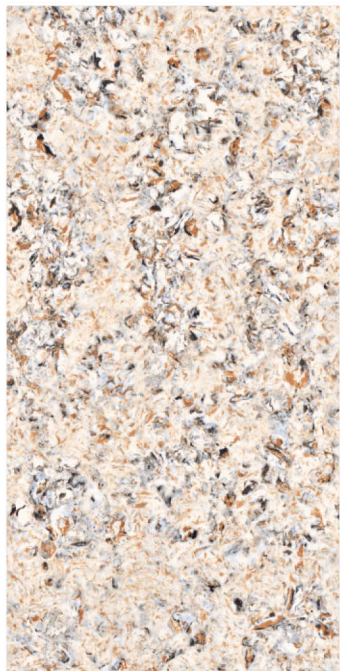
RANDOM
FACES

BACK TO INDEX



SILERIO

BROWN



WHITE



FINISH
POLISHED GLOSSY
SURFACE

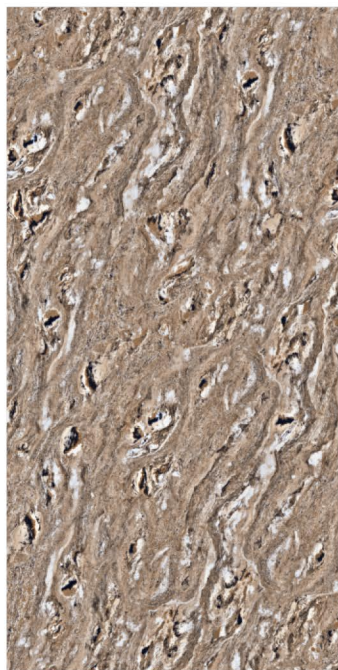
DIMENSION
600x1200 mm
24"X48" | 2'X4'

RANDOM
FACES

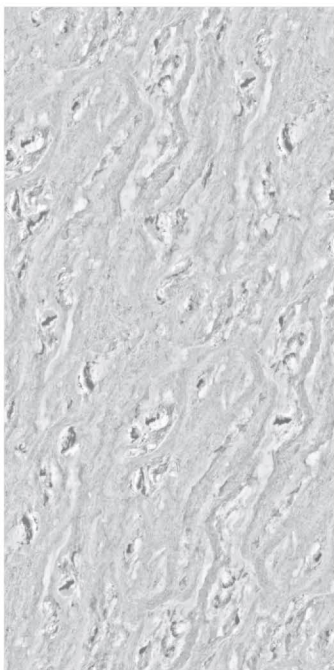
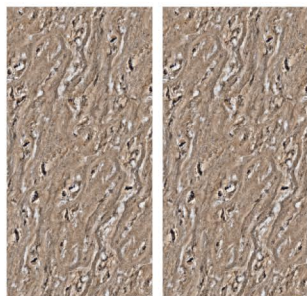
[BACK TO INDEX](#)



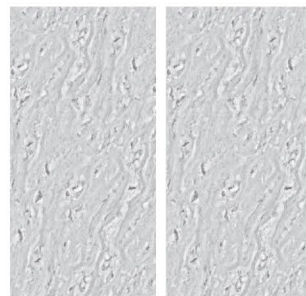
TERACON



BROWN



GRAY



FINISH
POLISHED GLOSSY
SURFACE

DIMENSION
600x1200 mm
24"X48" | 2'X4'

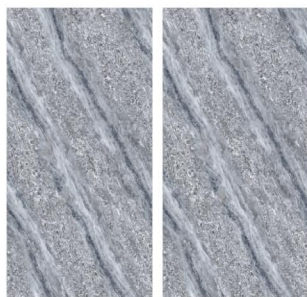
RANDOM
FACES

BACK TO INDEX 

USETA



GREY



WHITE



FINISH
POLISHED GLOSSY
SURFACE

DIMENSION
600x1200 mm
24"X48" | 2'X4'

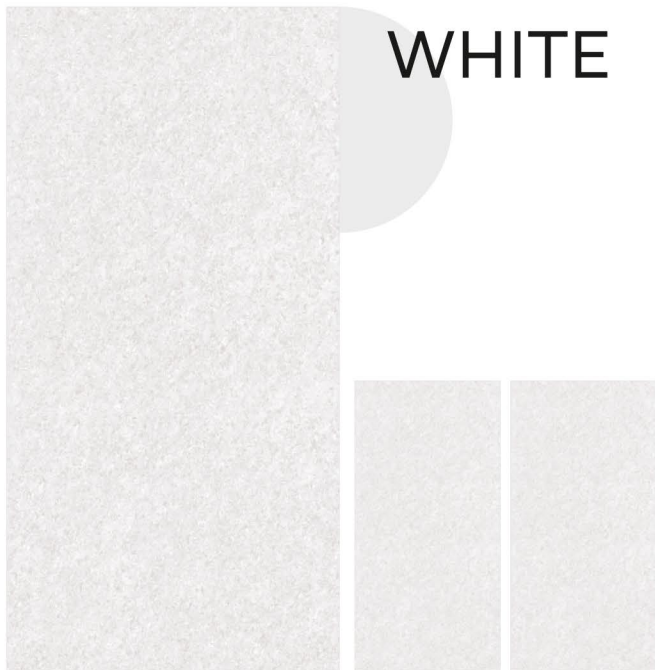
RANDOM
FACES

[BACK TO INDEX](#)



ZIZEL

WHITE



FINISH
POLISHED GLOSSY
SURFACE

DIMENSION
600x1200 mm
24"X48" | 2'X4'

RANDOM
FACES

[BACK TO INDEX](#)





FLEXURAL RESISTANCE

It has the ability to resist deformation under load. It deforms significantly but does not break



EAR RESISTANCE

It is the core feature it helps to give the perfect finish to edges while cutting.



THERMIC IMPACT RESISTANCE

This provides the surface to tolerate the impact of objects falling on them.



STAIN RESISTANCE

It is durable and easier to clean and retain the original exquisiteness every time.



ABSORPTION RESISTANCE

Our tiles are coated with liquid glass and hence absorb less water.



EASY TO INSTALL

This creation is super easy to apply it can be applied without any tool or laying instructions.



FROST PROOF

they are porous and absorb water easily. These tiles have relatively high frost resistance.



SCRATCH RESISTANCE

It is highly recommended for its scratch resistance property.



SLIP RESISTANCE

Our tiles have an abrasive grit on their surface, increasing their slip resistance significantly.



CHEMICAL RESISTANCE

Its highly resistant to harsh chemical agents like alkalis, acids, household chemicals, and swimming pool salts.



EASY TO CLEAN

It's highly convenient as it is easy to clean and it provides comfort with ease.



ECO LOGICAL

We are committed to the environment and recognize that sustainability is a significant and crucial part of our journey.



TECHNICAL SPECIFICATION

We are delighted to introduce our latest line of high-quality tiles, designed to meet the exacting standards of our esteemed clientele. we pride ourselves on delivering superior products that combine functionality, durability and aesthetic appeal.

600X1200MM

TILES IN EVERY SPACE

We understand that choosing the right tiles for specific application areas is crucial for achieving both functionality and aesthetic appeal. That's why we're delighted to introduce you to our comprehensive selection of tiles designed to excel in various environments:



Dining Hall



Bedroom



Bathroom



Living Room



SPA



Restaurant



Airport



Railway Station



Outdoor



Swimming Pool Area



Garden Area

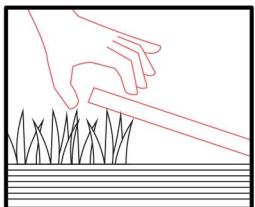


Parking Area

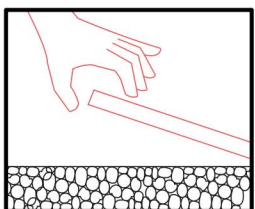
600X1200MM



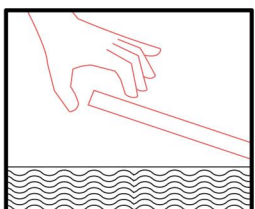
LAYING INSTRUCTION



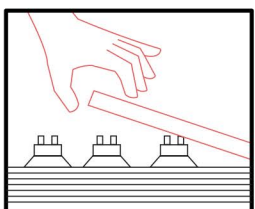
DRY LAYING
ON
GRASS



LAYING ON
GARVEL



LAYING ON
SCREED
WITH ADHESIVE



LAYING ON
RAISED
FLOOR



TECHNICAL SPECIFICATION

CHARACTERISTIC	STANDARD AS PER ISO13006:2018/ EN14411 Gr.B1a	MEAN VALUE OF	TEST METHOD
Regulatory Properties			
Deviation in length and width	± 0.30 % (±1.00mm)	± 0.10 %	ISO 10545-2
Deviation in thickness	± 5.00 % (±0.50mm)	± 4.00 %	ISO 10545-2
Straightness in side	± 0.30 % (±0.80mm)	± 0.10 %	ISO 10545-2
Rectangularity	± 0.30 % (±1.50mm)	± 0.10 %	ISO 10545-2
Surface flatness central curvature	± 0.40 % (±1.80mm)	± 0.20 %	ISO 10545-2
Surface flatness edge curvature	± 0.40 % (±1.80mm)	± 0.20 %	ISO 10545-2
Surface flatness warpage	± 0.40 % (±1.80mm)	± 0.10 %	ISO 10545-2
Surface quality	> 95% defects free	> 95% defects free	ISO 10545-2
Small Color Difference(For Plain Color)	ΔE <1.00	ΔE < 0.30	ISO 10545-16
Glossiness (Polished)	as per mfg.	Gloss Value > 90	Glossmeter 60°
Glossiness (Matt)	as per mfg.	3° < GLOSS < 7°	Glossmeter 60°
Glossiness (satin/Posh)	as per mfg.	7° < GLOSS < 18°	Glossmeter 60°
Structural Properties			
Water absorption	0.50 % ≤ Ev ≤ 3.00 %	0.060 % ≤ Ev ≤ 3.00 %	ISO 10545-3
Bulk density	as per mfg.	> 2.28 gm/cc	ISO 10545-3
Massive Mechanical Properties			
Modulus of rupture	Min. 30.0 N/mm ²	Min. 35.0 N/mm ²	ISO 10545-4
Breaking strength thickness ≥7.5	Min. 700.0 N	Min. 1000.0 N	ISO 10545-4
Breaking strength thickness ≥7.5	Min. 1100.0 N	Min. 1300.0 N	ISO 10545-4
Breaking strength thickness ≥7.5(For ≥15mm)	Min. 1100.0 N	Min. 1800.0 N	ISO 10545-4
Surface Mechanical Properties			
MOH'S hardness	as per mfg.	Polished Min 4* / Satin,Posh & Matt Min 6	BS EN 15771
Surface abrasion resistance	as per mfg.	Polish Min. Class 2, Satin & Posh Min. Class 3, & Matt Min. Class 4	ISO 10545-7
Deep abrasion resistance	Max. 175mm ⁻³	Max. 132mm ⁻³	ISO 10545-6
Thermal Hydrometric Properties			
Moisture expansion	Max. 0.06%(0.6mm/m)	0.02mm/m	ISO 10545-10
Thermal expansion(COE) at 100°C	as per mfg.	Max. 6.0 x 10 ⁻⁶	ISO 10545-8
Thermal shock resistance	Min. 10 Cycle	Min. 10 Cycle	ISO 10545-9
Impact resistance(COR)	Min. 0.55	Min. 0.55	ISO 10545-5
Frost resistance	as per mfg.	Frost Proof	ISO 10545-12
Chemical Properties			
Resistance to staining glazed	Min. Class 3	Min. Class 4	ISO 10545-14
Resistance to household chemicals & swimming pool salts glazed	Min. Class GB	Min. Class GA	ISO 10545-13
Resistance to low concentrate acid and alkalis glazed	as per mfg.	Min. Class GLA**	ISO 10545-13
Resistance to high concentrate acid and alkalis unglazed	as per mfg.	Min. Class GHB**	ISO 10545-13
Safety Properties			
Skid resistance (COF-WET PENDULAM)##	as per mfg.	Glossy P0(<12),Satin, Posh ≥P1(12-24) Matt ≥P2(25-34)	BS 7976-2
Slip resistance - (Satin / Matt (DCOF) (R value)##	as per mfg.	R9 to R13**	DIN 51130
Fire resistance	as per mfg.	Fire Proof	N.A.

PACKING DETAILS

PRODUCT	SIZE	THICKNESS	TILES / BOX	COVERAGE AREA / BOX	WEIGHT
GVT-PGVT	600x 1200mm	8.5mm	2 pcs.	1.44 sq. mtr.	27.300 KG (APPROX)

